

Science Knowledge Organiser

Animals including Humans

Y5

Main Foci: Biology

What should I already know?

Life cycle of a mammal:

- Embryo grows inside the mother. It is completely reliant on the mother.
- Mother gives birth to a live baby.
- Baby drinks milk from the mum. It develops fur/hair and starts to eat solid food.
- During adolescent stage, growth occurs - independence from the parents develops.
- An adult male and adult female will mate and reproduce.
-

What will I know about...? Animals including humans

Sexual Reproduction

Living things that use sexual reproduction have male and female cells

Sexual reproduction happens when male and female cells join. This is called fertilisation.

Fertilised cell splits in half, creating two cells. These cells continue to divide, doubling each time. Eventually, the cells will form a baby.

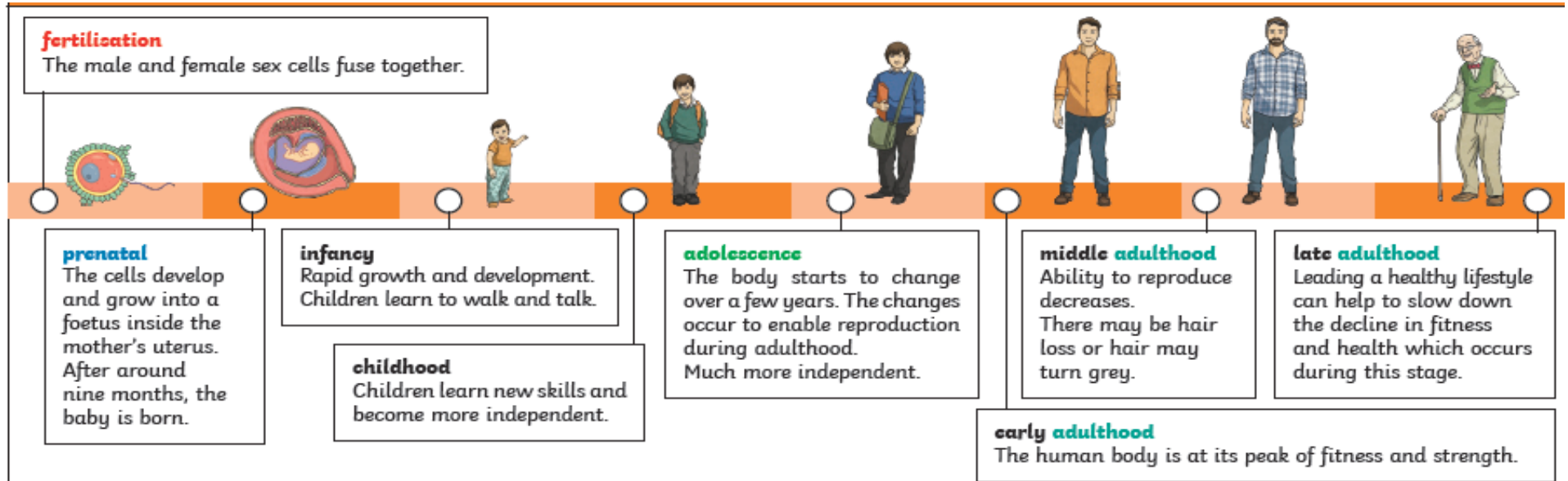
The baby will grow inside the female for the length of the pregnancy = gestation period. Baby is born at end of the pregnancy.

- Sexual reproduction in plants

Plants use sexual reproduction to make seeds, which grow to make new plants.

Vocabulary

Reproduction	The process by which new living things are made.
Sexual Reproduction	Needs two parents to make one offspring.
Asexual Reproduction	Needs only one parent, which creates offspring that are identical copies of the parent.
Fertilisation	The action or process of fertilizing an egg, female animal or plant.
Pregnancy	A process where a female mammal has an unborn baby inside of her.
Gestation	The period of time where the female mammal carries her baby in her body before giving birth.
Birth	The process of a female mammal giving birth to a live baby.



Science Knowledge Organiser

Animals including Humans

Y5

Key Questions

What is sexual reproduction?

What is asexual reproduction?

How do plants
reproduce?

What are differences in types of
reproduction?

What are the features of
reproduction?